



Maha RERA Reg. No.  
P52100016501



DWELL IN UNIQUENESS

[www.kishordevelopers.com](http://www.kishordevelopers.com)

# OUR JOURNEY SO FAR

## RESIDENTIAL

BHAGWATI FLORIANA  
BAVDHAN, PUNE

BHAGWATI ROYALE  
THERGAON, PUNE

PLATINUM TOWERS P-I  
WAKAD, PUNE

BHAGWATI VAISHNAVI  
RAVIVAR PETH, PUNE

BHAGWATI SHELTERS  
NARHE, PUNE

SOPAN BAUG HSG. COMPLEX  
PASHAN, PUNE

BHAGWATI MAESTROS  
BAVDHAN, PUNE

BHAWANI AJALA  
PASHAN, PUNE

SHREE BHAGWATI NAGAR  
PASHAN, PUNE

BHAGWATI PALMS,  
THERGAON, PUNE

ORIANA  
BANER, PUNE

AASHIYANA P-I  
PASHAN, PUNE

## RESIDENTIAL ON-GOING

PLATINUM TOWERS P-II  
WAKAD, PUNE

AASHIYANA P-II  
PASHAN, PUNE

AJALA P-II  
PASHAN, PUNE

## ABOUT KISHOR DEVELOPERS



At Kishor developers we have crafted masterpiece at prime locations to establish ourselves as one of the masters in construction field. Balancing art and science through design and quality is our specialty and the same depicts in every project. Bhagwati Maestros, Bhawani Ajala, Shree Bhagwati Nagar, Bhagwati Palms, Platinum Towers Phase 1 etc are just few examples of our Craftsmanship. Our team of highly experienced professionals ensures the highest standards in every sphere to give complete comfort In every home of every project.

As one the leading names in construction businesses of Pune. We enjoy an enviable reputation in the trade. We are veterans of an amazing 1000+ flats in and around Pune. The goodwill, trust and reputation we have with our customers is earned by keeping the commitments -

- Deliver what has been promised
- Deliver in the agreed time
- Deliver within the approved budget



Architectural Rendition

# ADORABLY DIFFERENT DELIGHTFULLY ELEGANT

Welcome to a neighborhood resplendent with beautifully landscaped gardens & premium amenities. Each of the home is designed to give life to your individual expressions and also an environment to grow and flourish in a thriving community. Unwind after a hard day's work at the clubhouse and experience a great sense of space. Come, rediscover yourself at Platinum Towers.

## WAKAD'S MOST FUTURE-READY HOMES



Architectural Rendition

# TRUE DEFINITION OF STYLE, LUXURY AND COMFORT

Your identity and your class is defined by the location you live in. For healthy and convenient life, staying in a convenient location makes a lot of difference. You are connected in all the ways to the major hubs of the city yet, your are far from the maddening rush. Platinum towers gives you an absolute location advantage so that you can enjoy the best of both the worlds.

## WAKAD'S MOST UNMATCHED LIFESTYLE

# THE MODERN ARCHITECTURE

## SPECIFICATIONS

### STRUCTURE

- Earthquake resistance R.C.C Framed structures according to IS Code.

### KITCHEN

- Granite platform in kitchen with stainless steel sink.
- Provision for Exhaust Fan & Water Purifier.

### TOILETS

- Designer glazed tiles up to lintel level.
- Provision for Exhaust Fan.
- Concealed Plumbing with Premium high quality CP fittings.
- Granite Door Frames for all toilets.
- Designer Sanitary Wares in toilets.

### FLOORING

- Designer Vitrified tiles 24"x24" for Living, Kitchen, Dining, Bedrooms.
- Superior Quality antiskid tiles in Toilets & Terrace.
- Designer glazed tiles up to lintel level in kitchen.

### WINDOWS

- 3 Track powder coated aluminum windows with mosquito nets.
- M S Safety grills for windows.
- Marble window sills for all windows.

### ELECTRIFICATION

- Concealed copper wiring with circuit breakers.
- TV & Telephone Point in living and Master bedroom.
- Adequate Electrical Points
- MCB. & ELCB For each flat to avoid accidents.

### DOORS

- Decorative main door with safety lock.
- Internal flush Doors.

### PAINTING

- Oil bound distempers in Flats.
- Superior quality Acrylic Emulsion for external walls

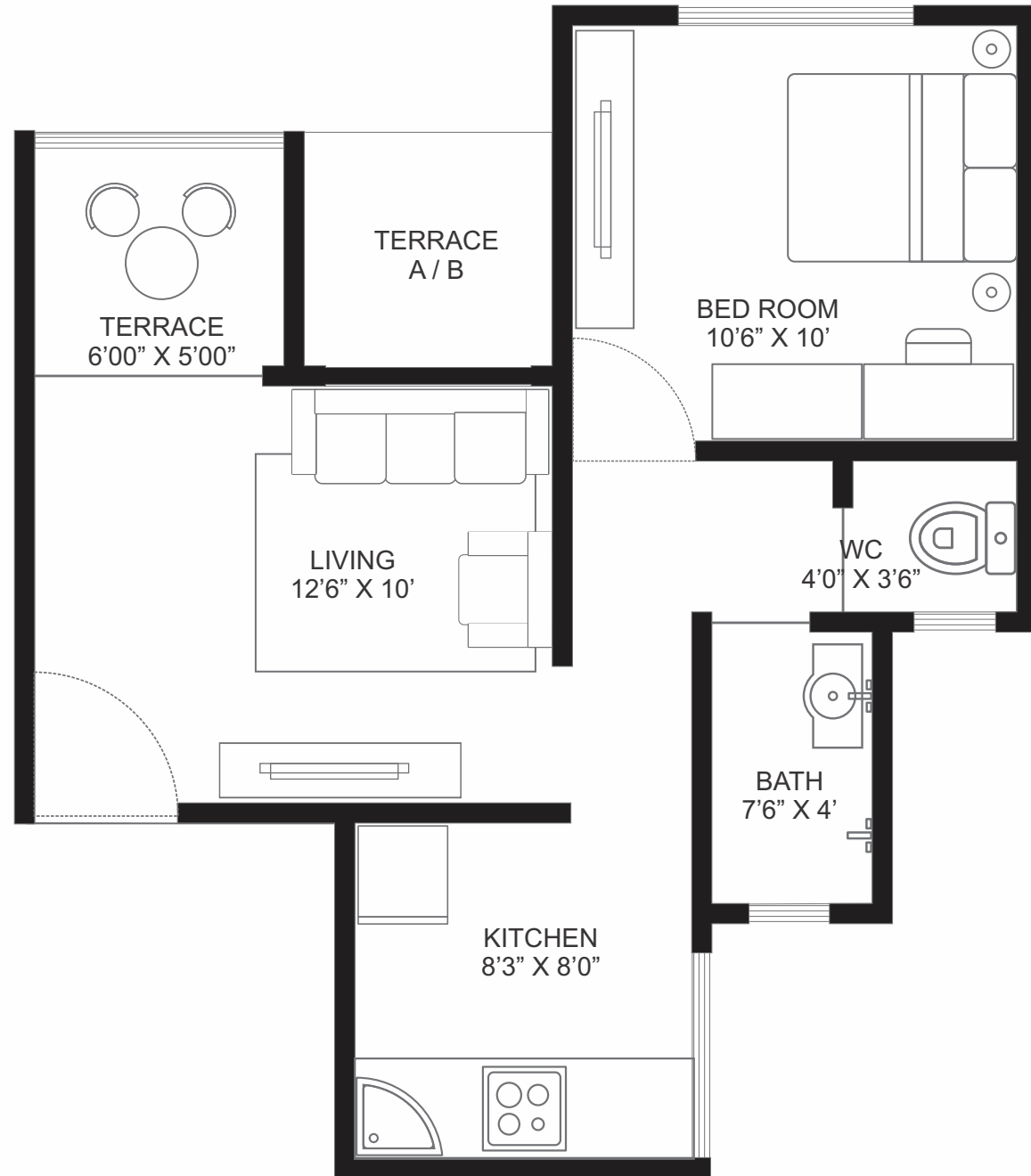
## AMENITIES

- Branded lift for Building.
- Power backup for common areas and lifts.
- Trimix / Paving blocks with street Lights & CPL fitting.
- Decorative compound wall.
- Decorative Entrance lobby.
- Rain water harvesting.
- Corporation water supply with additional bore-well.
- Name Plate & Letter Box for each flat.

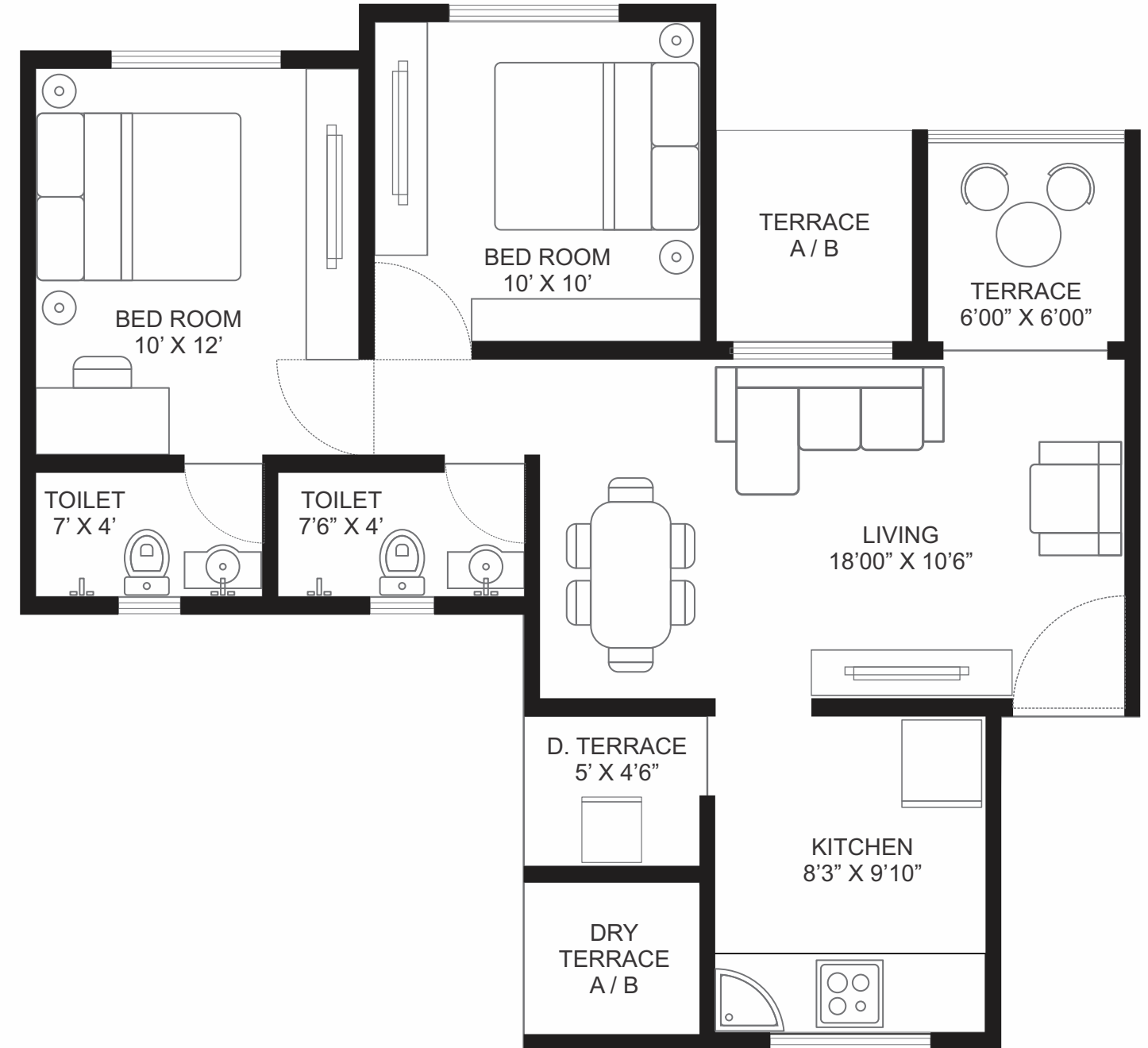


Photo for representational purpose only

# 1 BHK APARTMENT



# 2 BHK APARTMENT



# BUILDING 'C'

## EVEN FLOOR PLAN



# BUILDING 'C'

## ODD FLOOR PLAN

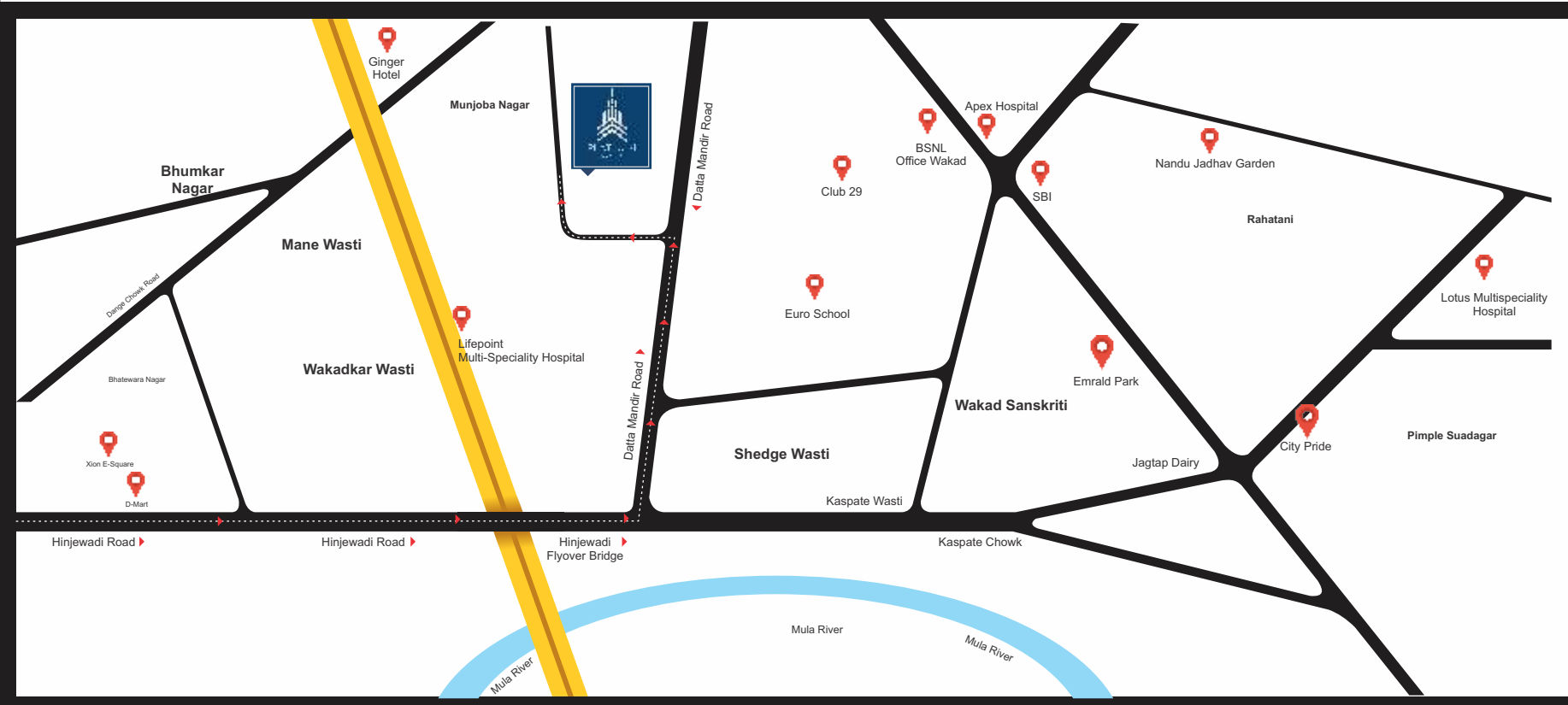




# WHERE ARE WE LOCATED?



# NEIGHBORHOOD



Not to Scale

- National Highway 1.0 Km
- Life Point Hospital 1.5 Km
- Sayaji Hotel 1.5 Km
- Sports City (Balewadi) 2.0 Km
- Indira & JSPM College 2.5 Km

- IT Park - Hinjewadi 2.0 Km
- Dilip Vengaskar Cricket Academy 2.5 Km
- D Mart Shopping Mall 3.0 Km
- Inox 3.5 Km
- Talegaon-Chakan MIDC 20 Km



## CREDITS

Architect

Arch. Dilip G. Kale

Structural Consultant

R. K. Randhava Consultant

Media House

Concept Roof Media And Communication

Strategic Partners

R-Constellation Pvt. Ltd.

Dedicated Team of Kishor Developers

**PROJECT BY**



in association with  
**L. S. Nimhan**

**KISHOR DEVELOPERS**

**SITE ADDRESS**

Sr. No. 175 1/1B, Platinum Tower, Datta Mandir Road, Wakad, Pune- 411057. Mah. India.

Email Id : platinumtowerswakad@gmail.com

**CORPORATE OFFICE ADDRESS**

Oriana Building, Flat No. 102, Sr. No. 35, Mumbai Bangalore Highway, Next to Renault Showroom, Baner, Pune- 411045 Ph. No. +91 7378 99 7000.

Email Id : info@kishordevelopers.com

Website : www.kishordevelopers.com

**CONTACT US !**

**7066 457 000**

**7066 467 000**



Maha RERA Reg. No.  
**P52100016501**